

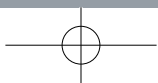


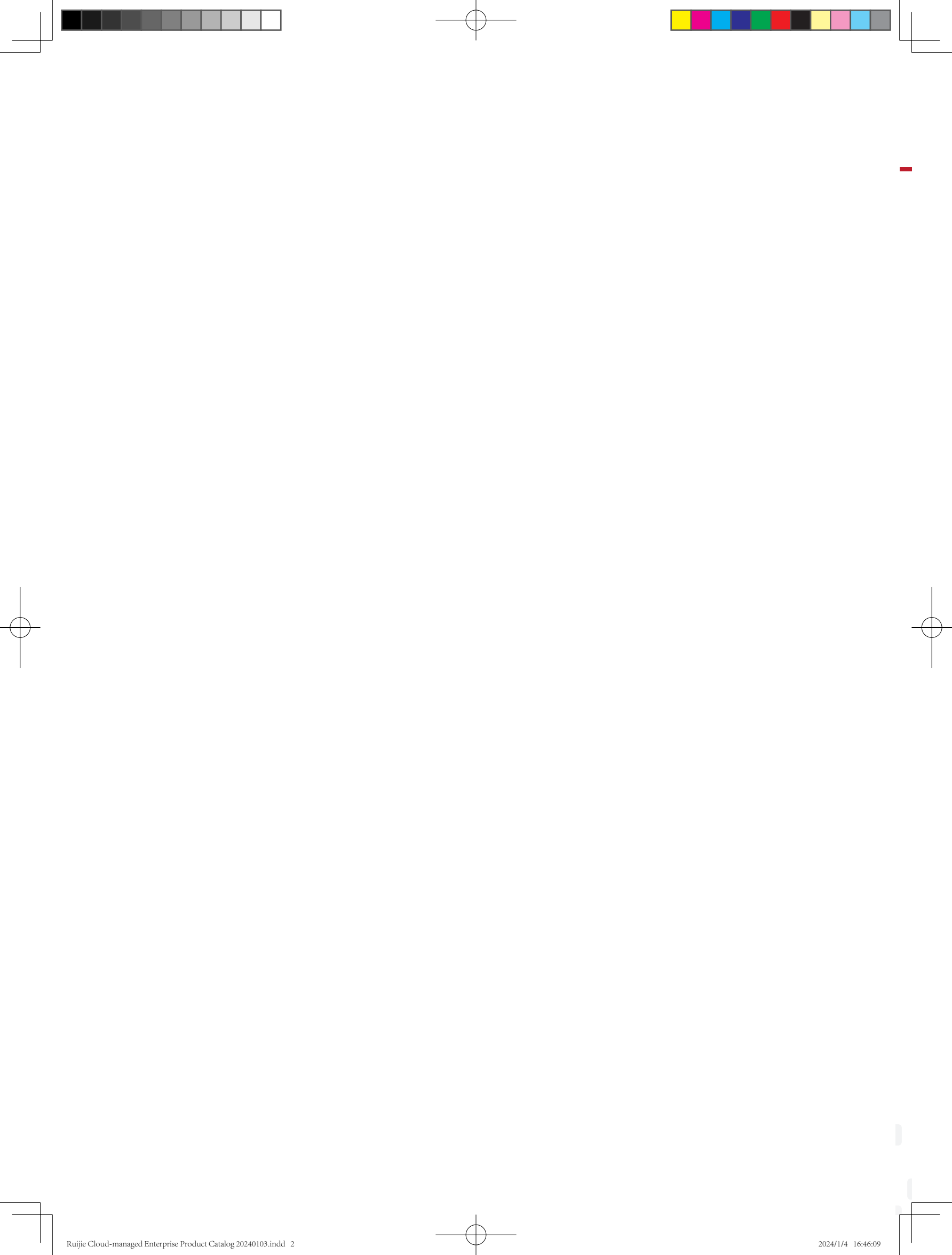
Ruijie Cloud-managed Enterprise Product Catalog

2024

INNOVATION
Beyond Networks

Ruijie





Index

About Ruijie	04	Ruijie Wireless	18
Ruijie Cloud Service		Indoor Series	
Ruijie Cloud Service	08	RG-AP880-L	20
Ruijie Cloud Mobile App	09	RG-AP840-L	20
Site Survey Planner	10	RG-AP820-L(V3)	21
		RG-AP820-L(V2)	21
Ruijie Switches	11	RG-AP810-L	22
		RG-AP720-L	22
Core Switch		Outdoor Series	
RG-CS88-08	13	RG-AP680P-L	23
		RG-AP680-L	23
Aggregation Switch		RG-AP680(CD)	24
RG-CS86 Full 10G Series	13	Wall Plate	
RG-CS86 Multi-GE Series	14	RG-AP180P-L	25
RG-CS85 Series	15	RG-AP180	25
Access Switch		Wireless Controller	
RG-CS83-PD Series	16	RG-WS6512-L	26
RG-CS83 Series	16	RG-WS6008	26
RG-S2915-L Series	17		
		Ruijie Firewall	27
		RG-WALL 1600-Z3200-S	27
		Highlight Value	28
		Training & Services	30

About Ruijie

First-class

China
enterprise-class
networking
Vendors

Over **35%**
compound growth
for **15** continuous
years



Founded in 2000
59 branches
7 R&D centers



7000+ employees
20000+ channel partners

Top 1 China's Enterprise-
Class WLAN Product Market
Shipment
Source: IDC, March 2023

Inspiring Achievements



Ethernet Switch **TOP3**

- **No.3** market share in the Chinese Ethernet switch market
(Data source: IDC 2022H1)
- Average growth of **49.8%** in the Chinese data center switch market in the recent three years



Wireless Network **TOP3**

- **No.3** in worldwide small-business WLAN access points shipments in 2022H1
(Data source: Gartner)
- **No.3** market share in the Chinese enterprise-class WLAN market
(Data source: IDC 2022H1)
- **No.1** in Wi-Fi 6 product shipment for 4 consecutive years
(Data source: IDC 2022)



Cloud Desktop **TOP1**

- **No.1** market share in the Chinese enterprise-class VDI client market for 6 consecutive years
(Data source: IDC 2020)
- **No.1** market share in the Chinese local computing IDV cloud desktop market for 2 consecutive years
(Data source: IDC 2022)



Ruijie

Trusted Partner of Various Industries

Ruijie's innovative products and solutions have been widely used in government, telecommunications, Internet, finance, transportation, education, healthcare, enterprise, and other industries for informatization construction.



Government

70+ national government agencies



Health Care

Serving **60%** of the top 100 hospitals in China



Finance

1000+ financial institutions



Education

100% double first-class universities



SMB

More than **1.3 million** SME customers








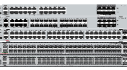






Enterprise

Serving **200+** of China's top 500 companies

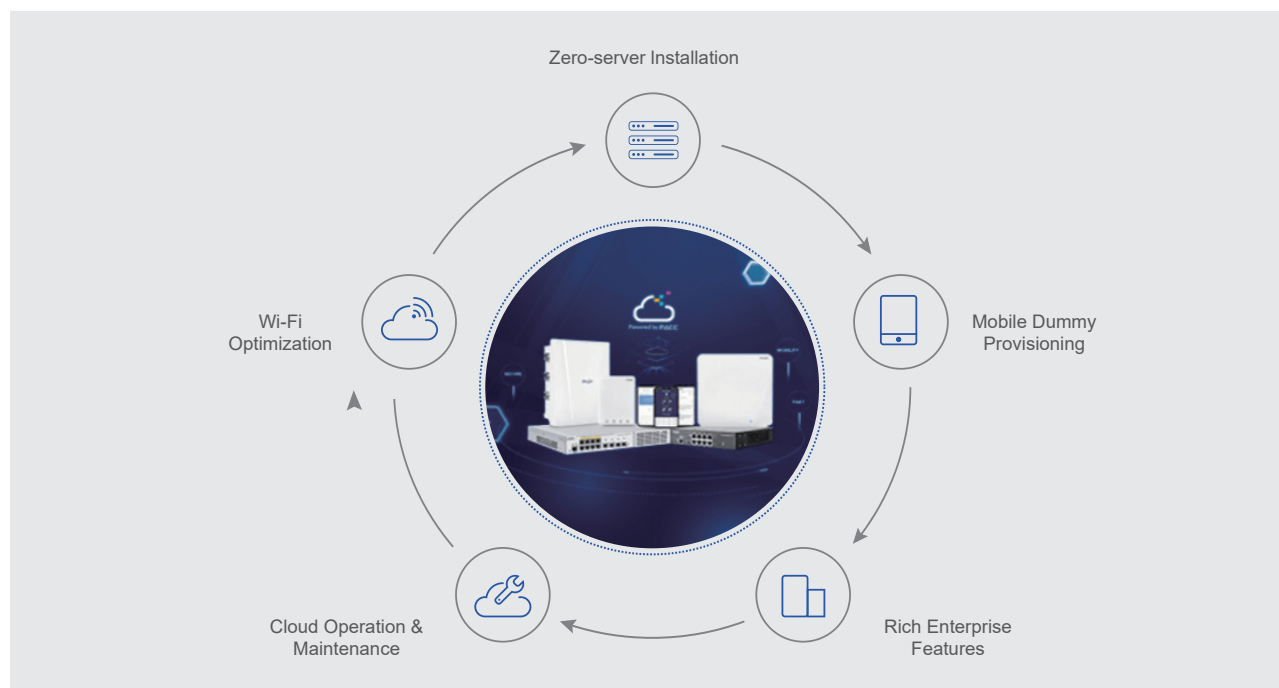
Ruijie Cloud Service

RUIJIE CLOUD PRODUCT FAMILY

Access Controller	Ruijie Cloud		
 <p>RG-WS6000 Series</p> <ul style="list-style-type: none"> • 224 to 1152 APs • VAC, Radius Integration 	 <ul style="list-style-type: none"> • Unified Device Management • Cloud Optimization & Analytic • Reporting & Compliance 	 <ul style="list-style-type: none"> • Ruijie Cloud app, free to Download • Mobile Provisioning • Mobile Inspection & Optimization • Mobile Monitoring & Alarm 	
Cloud Managed Switches	Cloud Managed APs		Firewalls
 <p>RG-CS88-8 Chassis Core Switch</p> <ul style="list-style-type: none"> • 8 Slots • Hot Swappable • 100/40G ready  <p>RG-CS86 Series Full 10GE</p>  <p>RG-CS86 Series Multi GE</p> <p>10G L3 Multi-G Aggregation Switches</p> <ul style="list-style-type: none"> • 2.5/5/10G PoE++ • Upto 32 10G (SFP+) • Upto 4 x 25G & 2 x 40G • Dual Power & FAN  <p>RG-CS83-PD Series L3 Access Switches</p> <ul style="list-style-type: none"> • Support VSU • Layer 3 routing • Dual PSU  <p>RG-CS85 Full L3 Aggregation Switches</p> <ul style="list-style-type: none"> • Support VSU • 24SFP options • 8 SFP+ uplinks • Layer 3 routing  <p>RG-S2915-L Series L2+ Access Switches</p>	<p>Ceiling Mount</p> <p>WiFi 6</p> <p>RG-AP820-L(V3)</p> <ul style="list-style-type: none"> • 4 Stream • AX3000 • 1GE + 2.5G SFP <p>WiFi 6</p> <p>RG-AP810-L</p> <ul style="list-style-type: none"> • 4 Stream • AX1800 • 1GE <p>WiFi 6</p> <p>RG-AP180</p> <ul style="list-style-type: none"> • AX1800 • 5 * GE Port • IPTV support <p>WiFi 6</p> <p>RG-AP680(CD)</p> <ul style="list-style-type: none"> • IP68 • AX1800 • 1 * SFP+1*GE • Directional Built-in Ant. <p>WiFi 6</p> <p>RG-AP680-L</p> <ul style="list-style-type: none"> • IP68 • AX3000 • 1 * SFP+1*GE • Omni-directional Built-in Ant. <p>WiFi 6E</p> <p>RG-AP880-L</p> <ul style="list-style-type: none"> • Wi-Fi 6E 4x4 • 2.4G/5G/6GHz • 8 Stream • 5Gbps Combo • 5Gbps Combo • 1Gbps PoE Out <p>WiFi 6</p> <p>RG-AP840-L</p> <ul style="list-style-type: none"> • AX5400 • 4x4 MIMO • 5Gbps Combo • 1Gbps PoE Out <p>WiFi 6</p> <p>RG-AP180P-L</p> <ul style="list-style-type: none"> • AX3000, 2x2 MIMO • 2.5Gbps Uplink • 4 x 1Gbps Downlink • LAN1 PoE Out • Flat Design <p>WiFi 6</p> <p>RG-AP680P-L</p> <ul style="list-style-type: none"> • IP68, AX6000, 4x4 MIMO • 10G SFP+, 5G RJ45 • 1G RJ45 PoE Out • Built-in Omni-directional Ant. 	<p>Outdoor</p> <p>WiFi 6</p> <p>RG-AP680-L</p> <ul style="list-style-type: none"> • IP68 • AX3000 • 1 * SFP+1*GE • Omni-directional Built-in Ant. <p>WiFi 6</p> <p>RG-AP680P-L</p> <ul style="list-style-type: none"> • IP68, AX6000, 4x4 MIMO • 10G SFP+, 5G RJ45 • 1G RJ45 PoE Out • Built-in Omni-directional Ant. 	 <p>RG-WALL 1600-Z3200-S 1-3 Gbps firewall throughput</p> <ul style="list-style-type: none"> • 10G SFP+, 1G SFP, 1G RJ45 • Extensible application control throughput • 3000 Firewall policies  <p>Performance Upgrade License</p>  <p>5-in-1 Library License</p>

ONE-STOP SOLUTION FOR SME

Lifecycle Support Without Compromise



IDEAL CHOICE FOR MANAGED SERVICE PROVIDER (MSP)

<p>Cloud managed, from Enterprise to Home Full product family cloud managed access, provide access to any user.</p> <p>Full Networking Product</p> <p>Unified Management for all Ruijie wireless access points, Switches and Gateways</p> <p>01</p>	<p>Provision in 3 mins via Self-Organizing Network How long will it take for 100 APs provisioning? 100 seconds, faster than it used to be.</p> <p>Custom Service</p> <p>Custom service (Elite Cloud) for ODM partners. Own cloud at lesser cost.</p> <p>02</p>	<p>Continue to evolve, scenario-based solutions Ruijie Cloud is constantly iterating to provide more value, making variety of projects touchable.</p> <p>Multi-tenant Platform</p> <p>Support flexible device grouping & sub-account privileges</p> <p>03</p>	<p>VLAN visualization, know business more VLAN visualized on Ruijie Cloud, lower technical barriers from configuration to management.</p> <p>Limited Lifetime Free Cloud Platform</p> <p>No annual subscription for Cloud Management</p> <p>04</p>
---	--	---	--

TAILOR-MADE FOR INDUSTRY

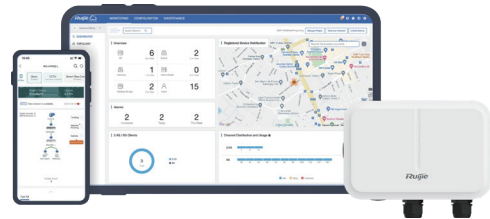
<p>Hospitality</p> <ul style="list-style-type: none"> Hybrid controller options Portal acceleration technology Flexible guest Wi-Fi policy Internet compliance audit 	<p>Retail Chain</p> <ul style="list-style-type: none"> Multi-site cloud management Multi-language guest portal Site-to-Site VPN POS Integration 	<p>Enterprise Office</p> <ul style="list-style-type: none"> 100+ user proven PPSK staff authentication No controller at premises Fast roaming
<p>University / High School</p> <ul style="list-style-type: none"> 10K+ high-density Wi-Fi Internet compliance audit L7 Traffic Flow Control Flexible guest/staff/student authentication 	<p>Staff Accommodation</p> <ul style="list-style-type: none"> Flexible Voucher Package 1-stop Paid Wi-Fi solution 1-click Wireless Optimization Remote Cloud Troubleshooting 	<p>Government</p> <ul style="list-style-type: none"> Private Cloud solution Project-based Customization Single-platform cloud management Mobile App Management

RUIJIE CLOUD SERVICE

RUIJIE CLOUD SERVICE
One of the world-leading network management platforms



OVERVIEW
Ruijie Cloud Service is Ruijie's easy and efficient cloud solutions for chain stores, small and medium-sized businesses and boutique hotels. The solutions include equipment deployment, monitoring, network optimization and operational lifecycle management; enabling customers with simple plug and play deployment and operation and maintenance. Meeting the needs for automatic cloud RF planning and user experience monitoring, it also support mobile monitoring (add equipment using QR code scanning, network status monitoring and alarm). At the same time it provides flexible wireless user access control features, including high security "One person, one machine and one password" PPSK, built-in cloud Portal and Facebook authentication.



- KEY FEATURES**
- Full Networking Product from Internet Firewall, Router, Switches to Wireless AP
 - Enterprise Cloud Functionality and Ultimate Wireless Performance verified by Tolly
 - Easy Provisioning by Mobile App

Unlimited Capacity

Lifecycle Support Tools

Enterprise Auth

99.99% Availability

RUIJIE CLOUD SPECIFICATIONS

Overview		Guest WiFi	
System Capacity	Unlimited	Customized captive portal	✓
Guest Portal	✓	Multi-languages support	✓
Management Platform	Web / Mobile APP	Control access to network resources	Time/Device/Traffic-limit policy
Supported Products	Wireless AP, Switches, Gateway	Flexible authentication options	PPSK (Staff), Voucher Access Code, One-click Portal, Social Login (Facebook), Open
Unified Management & Monitoring		Reporting & Analytics	
Dashboard with Google Maps	✓	Daily/Weekly/Monthly Device/Client/Network Summary Report	✓
Multi-tenant architecture	✓	Top 10 SSID/Traffic/Client/ AP Analytic Report	✓
Account Privileges	✓	Report Export	CSV/PDF
Multi-level groups	✓	Troubleshooting	
Project Handover	✓	Remotely reboot devices, web-CLI advanced diagnostic	✓
Project Sharing	✓	Alarm Notification	Email / App
Site Survey Planning		Operation/Upgrade/Config/ Client/Connection Log	✓
Heat Map	✓		
Automatic Wall Identification	✓		
Floor Plan Format	JPG, PNG, BIMAP, DXF		
Manually Drawing Obstacles	✓		
Report Export	✓		

RUIJIE CLOUD MOBILE APP

OVERVIEW

The Ruijie Cloud mobile App allows you anywhere anytime to manage your full network at fingertips. The App provides an dashboard view for multiple sites for you to monitor network realtime status. With step-by-step wizard, even a Newbie can master the whole network provisioning such as firewalls, routers, switches and wireless AP easily in minutes. With the App, you can perform WiFi Inspection and make WiFi optimization on-the-go without any IT professional assistance.



KEY FEATURES

- Limited Lifetime Free for Ruijie Cloud Service tenants
- Manage Your Full Network at Fingertips
- Network Inspection, Optimization & Upgrade On-the-go
- Easy Network Provisioning by Mobile App (without PC)



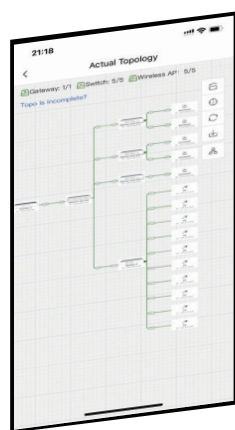
Fast Network Provisioning



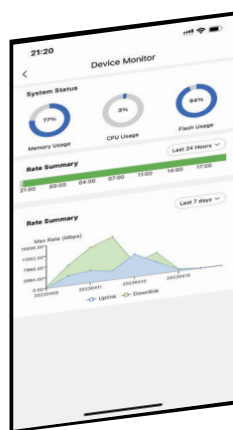
Full Network Monitoring



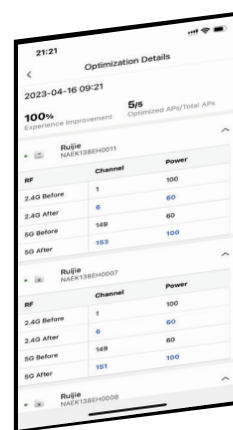
Wireless Optimization On-The-Go



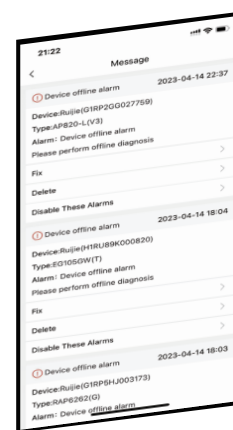
Topology Management



Traffic Analytic



WiFi Optimization



Alarm Notice



APP SPECIFICATIONS

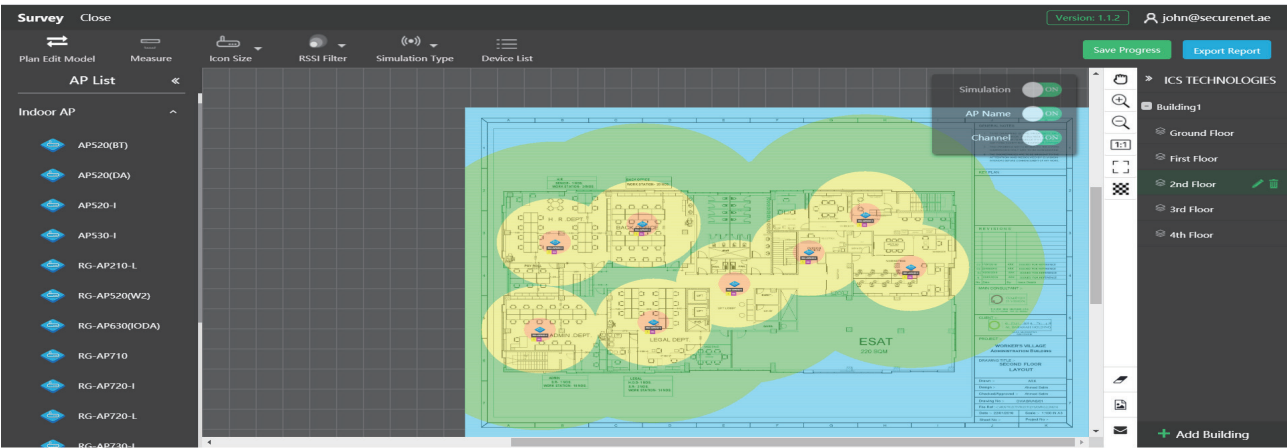
Ruijie Cloud Mobile APP	
Device Monitoring Dashboard	✓
Network Overview Topology	✓
User Monitoring	✓
Client Monitoring	✓
Switch Quick Provisioning	✓
AP Quick Provisioning	✓
Security GW Provisioning	✓
Wireless Network Inspection & Optimization	✓
Firmware Management	✓
Product Sizing & Selection Advisor	✓

SITE SURVEY PLANNER

FREE Cloud-based tool for early-on network deployment project planning

KEY FEATURES

- Automatic Wall Identification
- Drag-N-Drop Signal Simulation
- Professional Report Formation

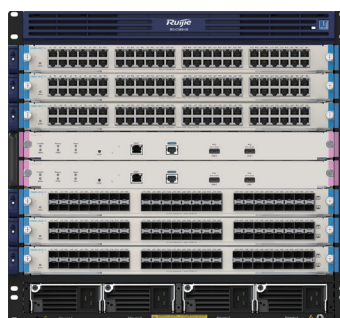


Ruijie Switches

Core, Aggregation, Access Switches

Product Family of Ruijie Cloud-managed Enterprise Switches

Core Switch

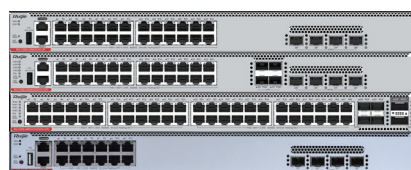


RG-CS88-08

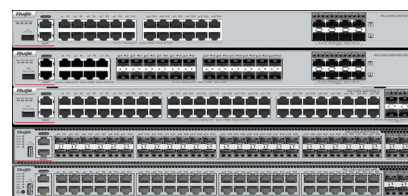
Aggregation Switch



RG-CS86 Full 10G Series



RG-CS86 Multi-Speed Series

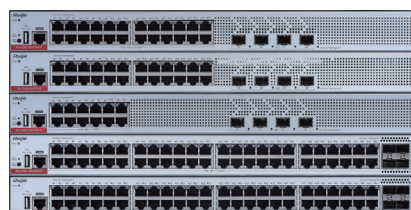


RG-CS85 Series

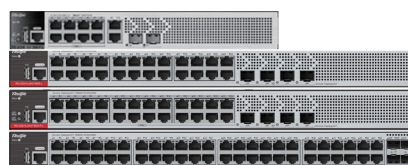
Access Switch



RG-CS83-PD Series



RG-CS83 Series



RG-S2915-L Series (CS81)

KEY TECHNOLOGIES

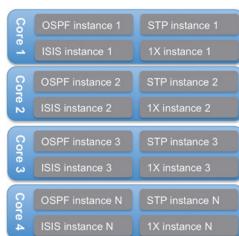
VIRTUAL SWITCHING UNIT (VSU) TECHNOLOGY

The Virtual Switching Unit (VSU) technology is an out of the box feature which requires no additional license. The switches are managed as 1 entity (Single IP) in VSU which simplifies management. This technology is also flexible, bandwidth of the VSU link can vary (1G/10G/40G/100G) and support distance stacking via fiber cables. Ruijie switch supports cross-device link aggregation for easy double uplink to server/switch, effectively maximizing bandwidth investment return.



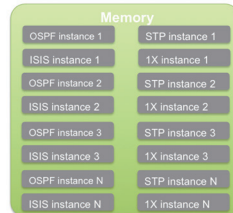
Virtual Switching Unit (VSU) Technology

MULTI-PROCESSING MODULAR OPERATING SYSTEM



- **Modularization**
Independent software module
Multi-processing as platform
Infrastructure

- **Multi-core CPU**
Assure high performance and support
multi-processing
- **Multi-processing**
Enable independent CPU and memory
processing
Steady system for resources supply or
sharing
Ensure non-stop operation



Modular Operating System

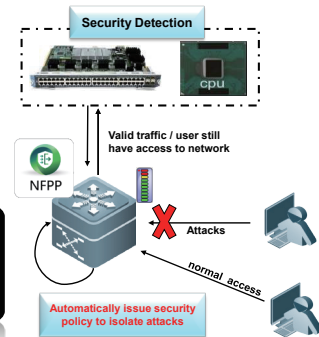
Since 1998, Ruijie has been investing on the R&D of modular operating system. The software platform is designed based on the next-generation RGOS 12.X multi-processing modular operating system to integrate the service features such as loosely coupled firewall, wireless and authentication into a unified cloud network operating system. The software platform also supports full virtualization and offers rich data center and campus network features. The key availability indicators such as multi-processing modules, process backup and hot patch have reached the industry-leading level.

NFPP: NETWORK FOUNDATION PROTECTION POLICY

The Ruijie NFPP (Network Foundation Protection Policy) is a protection system to enhance the inherent security performance of the switch by detecting attack sources and taking actions such as rate limiting and isolation, so that the switch processor and channel bandwidth resources can be protected and normal packet forwarding and protocol state can be guaranteed. NFPP protects the switch at data plane, management plane and control plane. The hardware-based protection allows the software-based protection mechanism to operate more efficiently without consuming too many resources, while software-based protection can cover the shortage of hardware-based protection, making protection policy more specific and flexible.

- **Security Processing Mode**
based on network threat
- **Automatically discover and**
prevent security attacks

```
5750-SiteBConf ig>nfpp
5750-SiteBConf ig-nfpp>int g0/1
5750-SiteBConf ig-GigabitEthernet 0/1>nfpp ?
  arp-guard      Set ARP guard information
  dhcp-guard     Set DHCP guard information
  dhcp-guard     Set DHCPV6 guard information
  icmp-guard     Set ICMP guard information
  ip-guard       Set IP guard information
  nd-guard       Set ND guard information
  ip-guard       Set IP guard information
  ip-guard       Set IP guard information
```



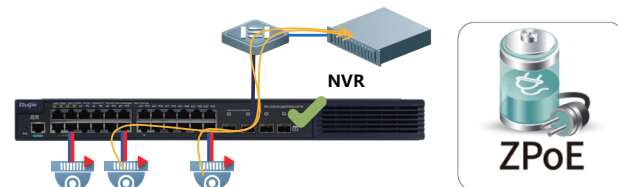
Security Detection Enabled by NFPP

RUIJIE FAQ

HOW CAN WE MAKE SURE POWERED DEVICES STILL WORK WHEN WE MAINTAINANCE THE NETWORK?

Since more IoT (Internet of Things) devices depend on PoE (Power over Ethernet) power supply nowadays, ZPoE (Zero-interruption PoE) feature is introduced to Ruijie PoE switches.

With such feature, the switch can provide nonstop PoE power supply to IP cameras, IP phones and other PD (Powered Device), even when a reboot happens. So operators can feel free to do maintenance job like firmware upgrade any time.



Core Switch

RG-CS88-08

OVERVIEW

The RG-CS88-08 switch is a multi-service core switch released by Ruijie Networks for next-generation converged networks. The switch combines various features of campus networks and data centers. Using the RGOS12.X modular OS, the switch supports IPv4, IPv6, and other network services, meeting the application requirements of Ethernet in the future. The RG-CS88-08 switch can be deployed in campus networks, and data centers based on business requirements.

KEY FEATURES

- With high-density 40GE and 100GE Ethernet ports: meets network development in the next decade
- Carrier-class Reliability: control engine, power & fan redundancy, hot-swappable components
- Powerful Multi-Service Capability: support large-scale MAC (up to 80K) and ARP table (up to 30K)
- Flexible management modes: including the Ruijie Cloud, SON, CLI, Web-based NMS, telnet, etc



Model	Performance				Hardware Specification		Physical
	Switching Capacity	Forwarding rate	MAC table	ARP table	supervisor module slots	service module slots	Unit weight
RG-CS88-08	9.6Tbps	5400Mpps	80K	30K	2	6	35.6KG(Empty configuration)

Aggregation Switch

RG-CS86 FULL 10G SERIES

OVERVIEW

Newly-launched RG-CS86-20XS4VS2QXS-D switch adopts advanced hardware architecture. Embedded with the latest modularized operation system, these 10G series switches provide better hardware processing performance and more convenient operation. Boasting 40G unlinking capacities, the RG-CS86-20XS4VS2QXS-D switch meets customers’ demands for high-density access and high-performance aggregation. What’s more, working as either aggregation layer switches for large networks or core switches for small and medium-sized networks, the RG-CS86-20XS4VS2QXS-D switch offers ideal and comprehensive end-to-end service, as well as various and flexible security configurations, thus making networks faster, safer and smarter.

KEY FEATURES

- Customized for Large Campus Network: 20*10G/1G SFP+ port, 4*25G/10G SFP28 ports, 2*40G QSFP+ ports
- Exceptional Performance: up to 2.56Tbps switching capacity
- Network Virtualization: Virtual Switch Unit (VSU) supported
- Out-of-box with advanced layer 3 routing features
- High Reliability: hot patches, power & fan redundancy

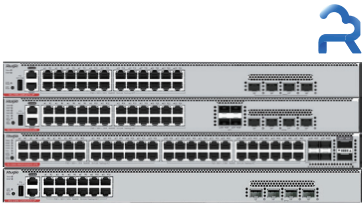


Model	Performance				Fixed port	VSU	Physical
	Switching Capacity	Forwarding rate	MAC table	ARP table	SFP/ SFP+/SFP28/ QSFP28 port		Unit weight
RG-CS86-20XS4VS2QXS-D	760Gbps/ 2.56Tbps	570Mpps/ 1260Mpps	32K	16K	20 1G/10G SFP+ 4 10G/25G SFP28 2 40G QSFP+	✓	4.6KG

RG-CS86 MULTI-GE SERIES

OVERVIEW

The RG-CS86 Multi-GE series switches offer flexible multi-GE access (10GE/5GE/2.5GE/1GE) and high-performance 10GE/25G/40GE uplink ports, catering to the demands of high-density access and high-performance aggregation. In compliance with the IEEE802.3bt standard, the RG-CS86 Multi-GE series switches adopt a high-power PoE power supply and achieve a maximum PoE output of 90 W through a single Ethernet port to significantly improve user experience.



KEY FEATURES

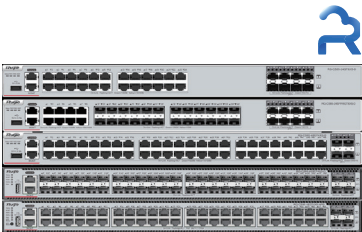
- Multi-GE Access: Meet requirements of Wi-Fi 6, Wi-Fi 6E, and Wi-Fi 7 APs
- High-Power PoE power supply, support IEEE802.3bt standard
- IPv4/IPv6 dual-Stack multi-Layer switching
- Network Virtualization: Virtual Switch Unit (VSU) supported
- High Reliability based on RGOS12, CPP, and NFPP technology
- Easy network maintenance through Ruijie Cloud

Model	Performance				Fixed port		POE Standard	Max. PoE	VSU	Physical
	Switching Capacity	Forwarding rate	MAC table	ARP table	RJ45 port	SFP/ SFP+/SFP28/ QSFP28 port				Rack Height
RG-CS86-24MG4VS-UP	440 Gbps/ 2.56Tbps	327 Mpps	32k	16k	24 1G/2.5G/ 5G BASE-T	4 10G/25G SFP28	802.3bt	370W	✓	1U
RG-CS86-48MG4VS2QXS-UPD	840 Gbps/ 2.56Tbps	625 Mpps	32k	16k	48 1G/2.5G/ 5G BASE-T	4 10G/25G SFP28 2 40G QSFP+	802.3bt	1600W	✓	1U
RG-CS86-24XMG4XS4VS-UPD	760 Gbps/ 2.56Tbps	565Mpps	32k	16k	24 1G/2.5G/ 5G/10G BASE-T	4 1G/10G SFP+ 4 10G/25G SFP28 2 40G QSFP+	802.3bt	1600W	✓	1U
RG-CS86-12XMG4VS-UP	440 Gbps/ 2.56Tbps	327 Mpps	32k	16k	12 1G/2.5G/ 5G/10G BASE-T	4 10G/25G SFP28	802.3bt	370W	✓	1U

RG-CS85 SERIES

OVERVIEW

Ruijie RG-CS85 series switches are the next-generation Ethernet switches that feature high performance and large capacity. The switches employ new-generation chips together with Ruijie's latest RGOS12.X modular OS to provide a larger entry capacity, faster hardware processing, and a better user experience. The RG-CS85 series switches support flexible 1000M access and provide four to eight fixed 10G SFP ports that support high-density high-performance uplink connection. They excellently meet user requirements for high-density access and high-performance convergence.



KEY FEATURES

- Hardware redundancy, guaranteed service continuity, and network connectivity
- VSU technology, flexible networking, and high reliability
- Layer 3 routing control, adaptive to multiple services, efficient and guaranteed data transmission
- Network security policies and real-time monitoring, delivering enhanced network robustness
- Ruijie Cloud and diverse management modes make your business easy

Model	Performance				Fixed port		Expansion	Max. PoE	VSU	Rack Height
	Switching Capacity	Forwarding rate	MAC table	ARP table	GE RJ45 port	SFP/ SFP+ port	Card type			
RG-CS85-24GT8XS-D	880Gbps	426Mpps/600Mpps	64K	24K	24	8 SFP+	4 1/10G SFP+ port 2 40/100G QSFP28 port	NA	✓	1 RU
RG-CS85-24SFP/8GT8XS-D	880Gbps	426Mpps/600Mpps	64K	24K	8 (Combo)	24 SFP 8 SFP+	4 1/10G SFP+ port 2 40/100G QSFP28 port	NA	✓	1 RU
RG-CS85-48GT4XS-D	880Gbps	406Mpps/600Mpps	64K	24K	48	4 SFP+	4 1/10G SFP+ port 2 40/100G QSFP28 port	NA	✓	1 RU
RG-CS85-48SFP4XS-D	880Gbps	406Mpps/600Mpps	64K	24K	NA	48SFP 4 SFP+	4 1/10G SFP+ port 2 40/100G QSFP28 port	NA	✓	1 RU
RG-CS85-48GT4XS-HPD	880Gbps	406Mpps/600Mpps	64K	24K	48	4 SFP+	4 1/10G SFP+ port 2 40/100G QSFP28 port	1440W	✓	1 RU

Access Switch

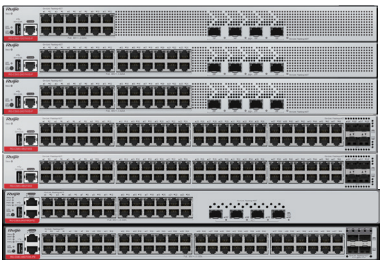
RG-CS83-PD SERIES

OVERVIEW

The RG-CS83-PD series are next-generation gigabit Ethernet switches launched by Ruijie according to its design philosophy of security, high efficiency, energy saving, and independent innovation. This series can provide full gigabit access and flexibly extensible 10G uplink data exchanges. With new hardware architecture and Ruijie's latest RGOS12.X modular OS, the RG-CS83-PD series are capable of providing more resource entries, faster hardware processing, and a better user experience.

KEY FEATURES

- PoE+ supported, power up a variety of terminal devices
- VSU technology, flexible networking, and high reliability
- Network security policies and real-time monitoring, delivering enhanced network robustness
- Ruijie Cloud and diverse management modes make your business easy



Model	Performance				Downlink		Uplink	Max. PoE	VSU	Rack Height
	Switching Capacity (Gbps)	Forwarding rate	Mac Table Size	ARP Table Size	GE (Base-T)	SFP	Card type			
RG-CS83-24GT4XS-PD	336Gbps	96Mpps	32K	4K	24	4 SFP+	720W	NA	✓	1 RU
RG-CS83-48GT4XS-PD	432Gbps	132Mpps	32K	4K	48	4 SFP+	1440W	NA	✓	1 RU

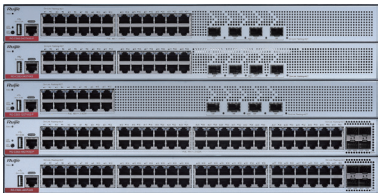
CS83 SERIES

OVERVIEW

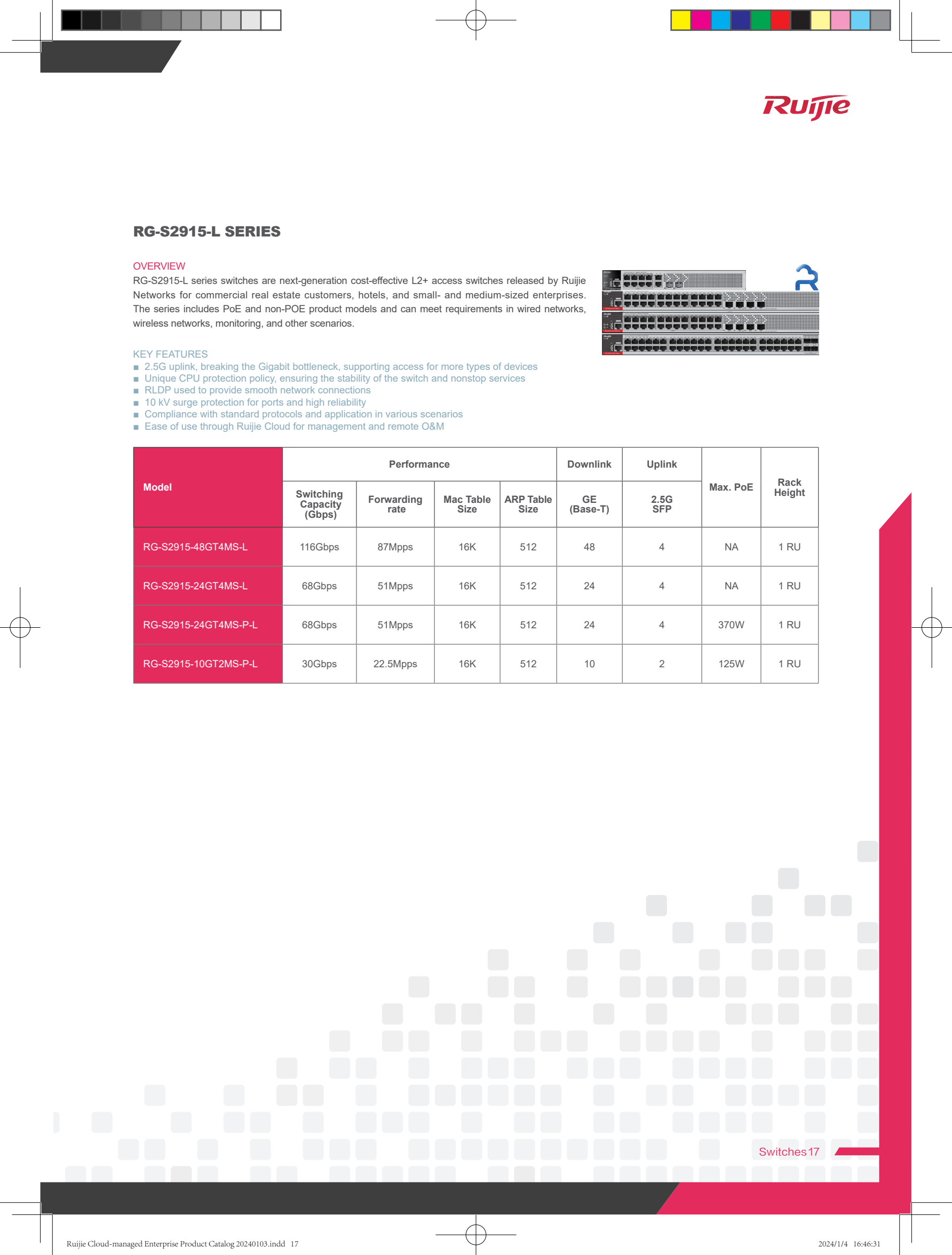
The RG-CS83 series switches are next-generation 1000M Ethernet switches launched by Ruijie Networks, featuring security, high efficiency, energy saving, and innovation. They provide full 1000M access and 10GE uplink data exchange with flexible scaling. With the new hardware architecture and Ruijie RGOS12.X modular operating system, the switch provides more resource entries, faster hardware processing performance, and better operation experience.

KEY FEATURES

- Multiple port types — 1000M electrical ports and uplink 10GE ports, PoE/PoE+ power supply, faster speed, and experience enhancement
- VSU, delivering flexible networking
- Diverse Layer 3 protocols: OSPF, RIP, and multicast
- Depth of 220 mm (8.66 in.) and compact design, which can be easily installed in a small cabinet
- Resistance to harsh environments and excellent anti-corrosion performance
- 10 kV surge protection on an interface, 8 kV surge protection for PoE power, 6 kV surge protection for non-PoE power, higher performance, and greater anti-interference capability
- Intelligent variable-speed fans, advanced heat



Model	Performance				Downlink		Max. PoE	VSU	Rack Height
	Switching Capacity (Gbps)	Forwarding rate	Mac Table Size	ARP Table Size	GE (Base-T)	SFP			
RG-CS83-12GT4XS-P	104Gbps	78Mpps	16K	4K	12	4 SFP+	405W	✓	1 RU
RG-CS83-24GT4XS	128Gbps	96Mpps	16K	4K	24	4 SFP+	NA	✓	1 RU
RG-CS83-48GT4XS	176Gbps	132Mpps	16K	4K	48	4 SFP+	NA	✓	1 RU
RG-CS83-24GT4XS-P	128Gbps	96Mpps	16K	4K	24	4 SFP+	405W	✓	1 RU
RG-CS83-48GT4XS-P	176Gbps	132Mpps	16K	4K	48	4 SFP+	460W	✓	1 RU



RG-S2915-L SERIES

OVERVIEW

RG-S2915-L series switches are next-generation cost-effective L2+ access switches released by Ruijie Networks for commercial real estate customers, hotels, and small- and medium-sized enterprises. The series includes PoE and non-PoE product models and can meet requirements in wired networks, wireless networks, monitoring, and other scenarios.



KEY FEATURES

- 2.5G uplink, breaking the Gigabit bottleneck, supporting access for more types of devices
- Unique CPU protection policy, ensuring the stability of the switch and nonstop services
- RLDp used to provide smooth network connections
- 10 kV surge protection for ports and high reliability
- Compliance with standard protocols and application in various scenarios
- Ease of use through Ruijie Cloud for management and remote O&M

Model	Performance				Downlink	Uplink	Max. PoE	Rack Height
	Switching Capacity (Gbps)	Forwarding rate	Mac Table Size	ARP Table Size	GE (Base-T)	2.5G SFP		
RG-S2915-48GT4MS-L	116Gbps	87Mpps	16K	512	48	4	NA	1 RU
RG-S2915-24GT4MS-L	68Gbps	51Mpps	16K	512	24	4	NA	1 RU
RG-S2915-24GT4MS-P-L	68Gbps	51Mpps	16K	512	24	4	370W	1 RU
RG-S2915-10GT2MS-P-L	30Gbps	22.5Mpps	16K	512	10	2	125W	1 RU

Ruijie Wireless














Vision of Ruijie Wireless

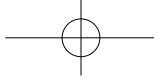
In the wave of the world's digital economy, wireless networks have natural advantages in terms of network construction costs and mobile access. In the future, wireless networks will still be the focus of network construction for various organizations, and will become a "must" to improve business quality and efficiency.

Since its inception, the wireless product line of Ruijie Networks has been adhering to the concept of "scenario innovation", gaining insight into the user's business and usage environment, designing tailor-made solutions for users, and providing a high-quality wireless experience.

In order to help customers in various industries realize the efficiency revolution, today's Ruijie Wireless continues to innovate in the data access layer, business optimization layer, and network application layer. Through ubiquitous, efficient, and stable connections, it builds highly secure and highly reliable, simplified operation and maintenance, and a good experience wireless network continues to improve the efficiency and empowerment of digital and intelligent transformation in various industries.

Product Family of Ruijie Cloud-managed Enterprise Wireless Product

Indoor AP Series	 RG-AP880-L AX7800 New Flagship Wi-Fi 6E	 RG-AP840-L AX5400 High-Performance Indoor AP	 RG-AP820-L(V3) AX3000 Wi-Fi 6	 RG-AP820-L(V2) AX2400 Wi-Fi 6	 RG-AP810-L AX1800 Wi-Fi 6	 RG-AP720-L 11ac Wave2
Outdoor AP Series	 RG-AP680P-L Omni-directional Designed for Beach	 RG-AP680-L Omni-directional Designed for Beach	 RG-AP680(CD) Directional Designed for Beach			
Wall AP Series	 RG-AP180P-L Available for all countries	 RG-AP180 Thin into the Wall				
Wireless Controller Series	 RG-WS6512-L 1152 Regular AP Management	 RG-WS6008 224 Regular AP Management				



KEY TECHNOLOGIES

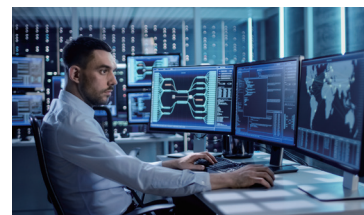
User Security - UPSK

Secure and simple access with advanced UPSK (User-based PSK) technology. Each user can have their own group of client devices (including IoT devices) communicating efficiently, such as file transferring and screencasting, while at the same time being isolated from other groups of other users for the best privacy protection. UPSK is implemented through dynamic segmentation of the network into micro-groups for each user, and requires only the access controller, thus improving customer TCO by eliminating the need for complicated NAC systems.



Better User Experience - AirReorder

Ruijie's "AirReorder" scheduling technology introduces a refined time slice mechanism for high-density and mixed client protocol cases. Boosting more than 20% performance compared to the traditional QoS scheduling, and fully compatible with existing client devices, such as Wi-Fi 5 and IoT devices. AirReorder is a smart resource allocation algorithm based on the usage tracking of each client and air interface analysis of the environment.



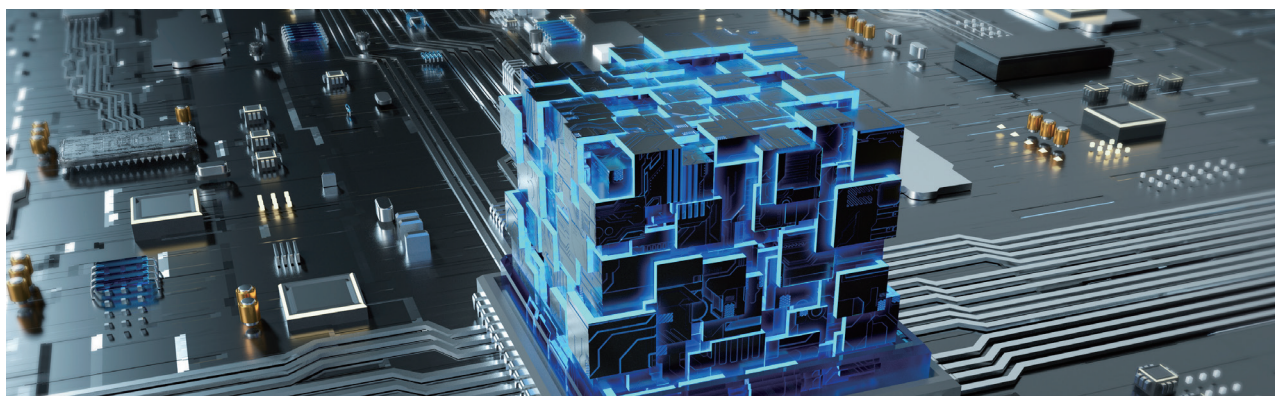
High Reliability - VAC

VAC (Virtual Access Controller) Cluster provides high availability and performance expansion at the same time, for both on-premises and hybrid managed networks. Up to 8 access controllers can be stacked to have the active backup and 8-fold management capability for the network. And only traditional cabling is needed, such as CAT6 and optical fiber.



Easy Maintenance - Ruijie Cloud

SON (Self-Organized Network) technology provides fast deployment of large numbers of network devices. By scanning any one of the AP devices in Cloud-managed mode, the entire connected network will be registered on the cloud. The network O&M (Operation and Maintenance) can be done remotely on the cloud, including remote monitoring, remote troubleshooting, network alarm notification, one-click wireless optimization, and wireless roaming optimization, without the need for an access controller.



Indoor Series

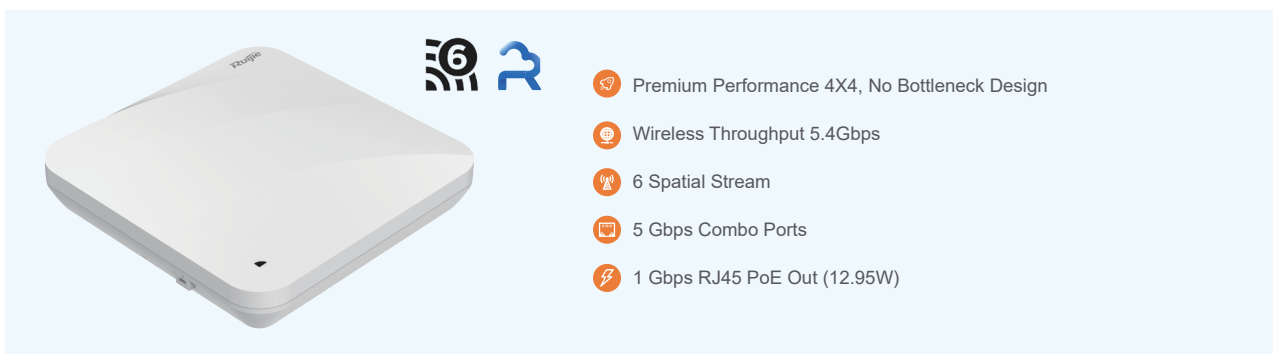
RG-AP880-L



RG-AP880-L is an IEEE 802.11ax-compliant Tri-radio wireless access point (AP) released for indoor high-density scenarios in the higher education, government, general education, finance, and business sectors.

- Tri-radio design with a hardware-independent and maximum access rate of 7.775 Gbps
- Wi-Fi 6E technology supported
- Multiple service ports, one Ethernet electrical port with a maximum wired access rate of 5 Gbps, another with 1 Gbps, and one 5 Gbps SFP port
- Local power supply and power over Ethernet (PoE)
- STA data forwarding, security, access control, and IoT application extension with Ruijie's access controllers (ACs) and Ruijie Cloud
- 3-Year hardware warranty

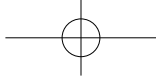
RG-AP840-L



The RG-AP840-L is an 802.11ax-compliant dual-radio wireless access point (AP) for hotels, offices, schools, factories, government, finance, business, and other indoor scenarios.


- Dual-band design (2.4GHz + 5 GHz), six spatial streams, and up to 5.375 Gbps peak data rate
- 6 Gbps wired data rate to achieve high-speed wireless data backhaul, and access through optical and Ethernet cables for flexible networking
- OFDMA and MU-MIMO, optimizing multi-user access experience
- IEEE 802.11k/v/r support, roaming stickiness optimization, and remote association for a better user experience
- WPA3, Enhanced open security, 802.1X, WPA3, and other encryption authentication to enhance data security
- Local and cloud management modes, and intelligent wireless network optimization, reducing TCO and maximizing ROI
- Rich IoT features: PoE output, Bluetooth 5.1, ZigBee*, and wireless locating
- 3-Year hardware warranty


*ZigBee is supported by the hardware only.



Ruijie

RG-AP820-L(V3)







- High-Performance Wi-Fi 6 AP
- Wireless Throughput 3.0Gbps
- 4 Spatial Stream
- 2.5Gbps SFP Port
- 1Gbps RJ45 Port

RG-AP820-L(V3) is a cost-effective entry-level wireless access point with Wi-Fi 6 dual-radio design. It not only has simplicity and flexibility for small and medium-sized enterprises, but the features, functionality, and performance quality to scale up to large-enterprise network deployments.

- Maximum of 2.975Gbps wireless throughput when 160MHz bandwidth in 5G radio mode adopted (HE160)
- Wi-Fi 6 features and guarantees minimal signal interference
- Maximum ROI based on free cloud management
- Hybrid management (cloud/ controller/ standalone)
- Automated radio optimization by artificial intelligence
- 3-Year hardware warranty

RG-AP820-L(V2)





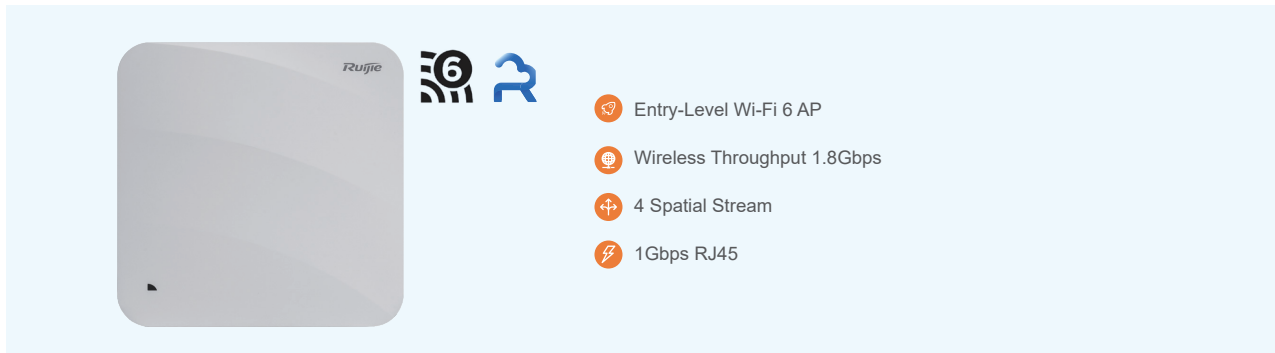
- High-performance Entry Wi-Fi 6 AP
- Wireless Throughput 2.4Gbps
- 4 Spatial Stream
- 1Gbps RJ45 Port

RG-AP820-L(V2) is the Ruijie's highest price-performance entry Wi-Fi 6 enterprise indoor access point. It's the ideal choice for hotel, office, retail, and school scenarios.

- Maximum of 2.4Gbps wireless throughput when 160MHz bandwidth in 5G radio mode adopted (HE160)
- Wi-Fi 6 features and guarantees minimal signal interference
- Maximum ROI based on free cloud management
- Hybrid Management (cloud/ controller/ standalone)
- Automated Radio Optimization by artificial intelligence
- 3-Year hardware warranty



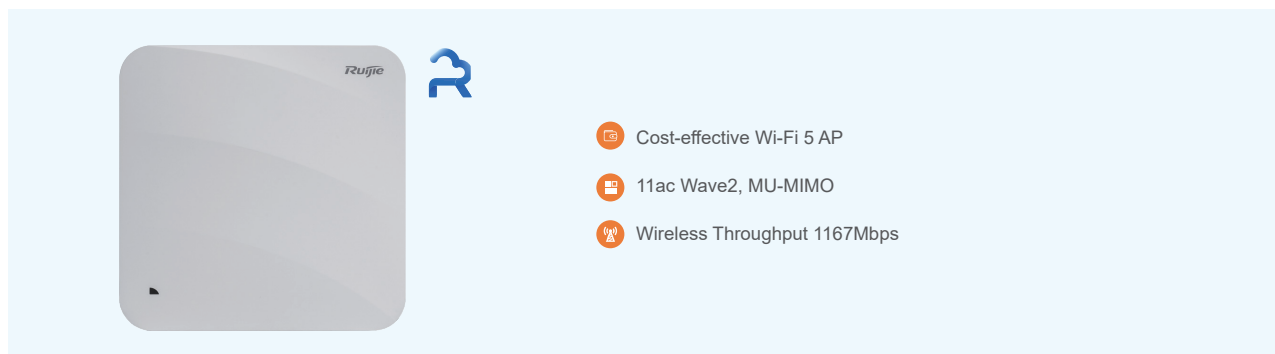
RG-AP810-L



RG-AP810-L is a cost-effective entry-level wireless access point with Wi-Fi 6 dual-radio design. It not only has simplicity and flexibility for small and medium-sized enterprises, but the features, functionality, and performance quality to scale up to large-enterprise network deployments.

- Maximum of 1.775Gbps wireless throughput when 80MHz bandwidth in 5G radio mode adopted (HE80)
- Wi-Fi 6 features and guarantees minimal signal interference
- Maximum ROI based on free cloud management
- Hybrid Management (cloud/ controller/ standalone)
- Automated Radio Optimization by artificial intelligence
- 3-Year hardware warranty

RG-AP720-L



The RG-AP720-L is a dual-radio and 802.11ac Wave 2 access point (AP) designed for indoor high-density scenarios covering hotels, offices, schools, factories, government, finance, and business.

- Each radio supports two spatial streams and four in total
- A combined data rate of 1.167Gbps, with up to 300 Mbps in the 2.4 GHz band and 867 Mbps in the 5 GHz band
- Environment-friendly Design and Lower Power Consumption
- Wireless network security, RF management, mobile access, QoS guarantee, and seamless roaming
- STA data forwarding, security features, and access control working with Ruijie access controllers (ACs)
- 3 Different management modes for selection, perfect for your ever-changing business needs
- 3-Year hardware warranty

Outdoor Series

RG-AP680P-L



- Outdoor AP Designed for Beach (Omni-directional)
- Wireless Throughput 6.0Gbps
- 8 Spatial Streams
- 10Gbps SFP+ Port & 5Gbps RJ45 Port
- 1Gbps PoE Out RJ45 Port
- IP68, Salt Spray Corrosion Proof

The RG-AP680P-L is an omnidirectional Wi-Fi 6 dual-radio outdoor access point (AP) for outdoor scenarios such as beaches, hotels, education, small and medium-sized enterprises, energy, shopping malls, government, and healthcare facilities.

- Support IP68 rating protection and salt spray corrosion proof, designed for beach
- Industrial-grade product design, operating temperature: -40°C to $+65^{\circ}\text{C}$
- High-power omnidirectional antennas with 360° coverage to every corner
- Upgraded to Wi-Fi 6, a combined data rate of up to 5951 Mbps with hardware-independent dual-radio design
- Wireless network security, radio control, mobile access, QoS, seamless roaming, and expansion of the Internet of Things (IoT) module
- The AP can implement STA data forwarding, security features, access control, and IoT application extension with Ruijie access controllers (ACs) and Ruijie Cloud
- Local power supply and Power over Ethernet (PoE) supported
- Built-in smart antennas, mesh networks, and point-to-multipoint (P2MP) network bridges supported

RG-AP680-L





- Outdoor AP Designed for Beach (Omni-directional)
- Wireless Throughput 3.0Gbps
- 4 Spatial Streams
- 1Gbps SFP Port
- 1Gbps RJ45 Port
- IP68, Salt Spray Corrosion Proof

The RG-AP680-L is an omnidirectional Wi-Fi 6 dual-radio outdoor access point (AP) for outdoor scenarios such as beaches, hotels, education, small and medium-sized enterprises, energy, shopping malls, government, and healthcare facilities.

- Support IP68 rating protection and salt spray corrosion proof, designed for beach
- Industrial-grade product design, operating temperature: -40°C to $+65^{\circ}\text{C}$
- High-power omnidirectional antennas with 360° coverage to every corner
- Upgraded to Wi-Fi 6, a combined data rate of up to 2975 Mbps with hardware-independent dual-radio design
- Wireless network security, radio control, mobile access, QoS, seamless roaming, and expansion of the Internet of Things (IoT) module
- The AP can implement STA data forwarding, security features, access control, and IoT application extension with Ruijie access controllers (ACs) and Ruijie Cloud
- Local power supply and Power over Ethernet (PoE) supported
- Built-in smart antennas, mesh networks, and point-to-multipoint (P2MP) network bridges supported

RG-AP680(CD)

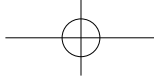


- Outdoor AP Designed for Beach (Directional)
- Wireless Throughput 1.8Gbps
- 4 Spatial Streams
- 1Gbps SFP Port
- 1Gbps RJ45 Port
- IP68, Salt Spray Corrosion Proof

The RG-AP680(CD) is a universal Wi-Fi 6 dual-radio outdoor access point (AP) for outdoor scenarios such as beaches, hotels, education, wireless cities, energy, and business malls.


- Support IP68 rating protection and alt spray corrosion proof, designed for beach
- Industrial-grade product design, operating temperature: -40°C to $+65^{\circ}\text{C}$
- The access rate of up to 2.4 Gbps with hardware-independent dual-radio design, up to 1.775 Gbps access rate works in 2.4G+5G mode
- Wireless network security, radio control, mobile access, QoS, seamless roaming, and expansion of the Internet of Things (IoT) module considered for design
- STA data forwarding, security features, access control, and IoT application extension with Ruijie access controllers (ACs) and Ruijie Cloud
- Local power supply and Power over Ethernet (PoE) supported
- Built-in directional smart antennas, mesh networks, and point-to-multipoint (P2MP) network bridges supported













Wall Plate

RG-AP180P-L



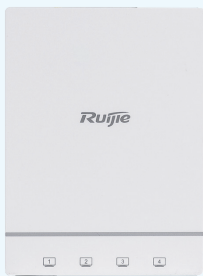



-  New Wall AP for All Countries
-  Throughput 3.0Gbps
-  4 Spatial Streams
-  2.5Gbps Uplink Port
-  4 x 1Gbps Downlink Ports
-  LAN1 PoE Out for IP Phone
-  Flat Design, with Global Mounts






RG-AP180P-L is a dual-radio 802.11ax-compliant Wi-Fi 6 wireless access point (AP) provided for hotels, offices, schools, factories, government, finance, business, and other indoor high-density scenarios. It is especially suitable for small-sized office environments like hotels, apartments, healthcare facilities, and educational settings.

- Suitable for various junction boxes(86mm x 86mm, EU, US), even flat wall installation
- Support PoE out for an IP phone, allowing guests to make emergency calls in case of a power outage
- 802.11ax and supports the 2.4 GHz and 5 GHz frequency bands adopted, up to 2.975 Gbps access rate
- Wireless network security, radio control, mobile access, QoS, seamless roaming, and expansion of the Internet of Things (IoT) module expansion considered for design
- Wireless user access management, data forwarding, secure access control, and other network deployment work working with Ruijie access controllers (ACs)
- Powered locally or over Ethernet based on the power supply conditions of the customer on site
- DC 48V local power supply or 802.3af/at PoE in

RG-AP180





-  Wireless Throughput 1.8Gbps
-  4 Spatial Streams
-  1Gbps Uplink
-  4 x 1Gbps Downlink Ports
-  86-Type/US/EU Standard Junction Box are Adapted

RG-AP180 is a dual-radio 802.11ax-compliant Wi-Fi 6 wireless access point (AP) provided for hotels, offices, schools, factories, government, finance, business, and other indoor high-density scenarios. It is especially suitable for small-sized office environments like hotels, apartments, healthcare facilities, and educational settings.

- 802.11ax and supports the 2.4 GHz and 5 GHz frequency bands adopted, up to 2.975 Gbps access rate
- Wireless network security, radio control, mobile access, QoS, seamless roaming, and expansion of the Internet of Things (IoT) module expansion considered for design
- Wireless user access management, data forwarding, secure access control, and other network deployment work working with Ruijie access controllers (ACs)
- 86-Type junction box is adapted, and US/EU standard junction boxes are also compatible with mount-kit accessories(sold separately)
- DC 48V local power supply or 802.3af PoE in

Wireless Controller

RG-WS6512-L



- High-Performance Large Campus Wireless Controller
- Max. 1152 Regular AP Management
- Advanced WIPS Security Protection
- High Availability Virtual AC Technology
- UPSK/PPSK/802.1X Enterprise Authentication for Staff
- Web Portal Authentication for Guest

The RG-WS6512 high-performance wireless access controller (AC) is developed to support next-generation high-speed wireless networks. It can be deployed on a Layer 2 or Layer 3 network without any architecture or hardware changes, delivering seamless and secure control over wireless networks.

- Up to 128 wireless access points (APs) by default
- Layered management and control for large networks
- Switching between centralized and local forwarding
- Load balancing between APs, dynamic bandwidth allocation for STAs, 5G band-select, smooth network connection

RG-WS6008



- Next-generation Enterprise-class Wireless Controller
- Max. 224 Regular AP Management
- Advanced WIPS Security Protection
- High Availability Virtual AC Technology
- UPSK/PPSK/802.1X Enterprise Authentication for Staff
- Web Portal Authentication for Guest

The Ruijie WS6008 wireless access controller (AC) is the next-generation enterprise-class wireless network controller that delivers a secure, robust, highly scalable wireless solution at an unbeatable total cost of ownership (TCO). It can be deployed on either a Layer 2 or Layer 3 network without any architecture or hardware changes, delivering seamless and secure control over wireless networks.

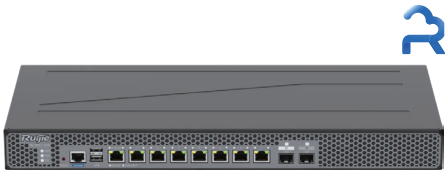
- Manage up to 32 wireless access points (APs) by default
- Manage a maximum of 224 universal APs or 448 wall plate wireless access points with a license for capacity expansion
- Simplify wireless networks by centralized and visualized management and control

Ruijie Firewall

RG-WALL 1600-Z3200-S

OVERVIEW

RG-WALL 1600-Z3200-S adopts a high-performance network forwarding service platform based on DPDK, supports easy&fast intelligent setup, and provides active asset discovery, intelligent policy recommendation, one-click fault analysis, and business health diagnosis functions to simplify product setup and maintenance. Rich security functions, able to support intrusion prevention, anti-virus, port scanning, traffic learning, application control, DoS/DDoS protection, and other functions. Support centralized Ruijie Cloud management, data synchronization cloud analysis and reporting, remote monitoring and maintenance, batch configuration, and automated inspection. The RG-WALL 1600-Z3200-S has performance expansion capabilities that can be extended by purchasing performance licenses. It is suitable for deployment on the user's Internet egress.



KEY FEATURES

- Easy deployment and simple O&M, fully unleashing security defense value
- Port scan + traffic learning, intelligent policy recommendation
- Policy execution after simulation, policy optimization anytime
- One-click fault located in the intelligent diagnostic center
- Cloud management, batch upgrade firmware remotely

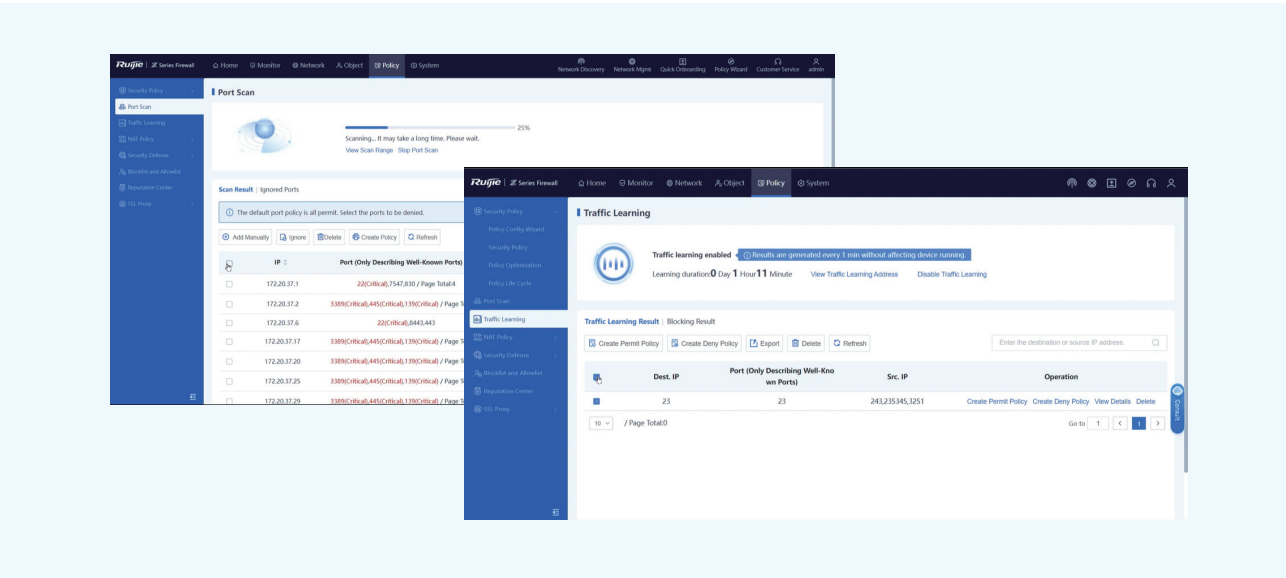
Product Name	Type	Description
RG-WALL 1600-Z3200-S	Hardware	The RG-WALL 1600-Z3200-S cloud management firewall provides 8 x 1G Ethernet ports, 1 x 1G SFP port, 1 x 10G SFP+ port, and a single power supply (for factory delivery). The firewall is 1 U high and supports the expansion of 1 TB enterprise-class hard disk.
RG-WALL 1600-Z3200-S-1G-LIC	License	Performance expansion license for the RG-WALL 1600-Z3200-S cloud management firewall. A maximum of 1 license can be used for Z3200-S. (Expand performance to premium)
RG-WALL 1600-Z3200-S-LIS-M-1Y	License	Intrusion prevention (IPS), antivirus (AV), app identification (APP), URL signature library four-in-one license for the RG-WALL 1600-Z3200-S cloud management firewall: One license provides one-year upgrade services for IPS, AV, APP, and URL signature libraries.
RG-NSEC-HDD-1T	Hardware	1 TB enterprise-class hard disk can be added to meet hard disk configuration requirements.



HIGHLIGHT VALUE

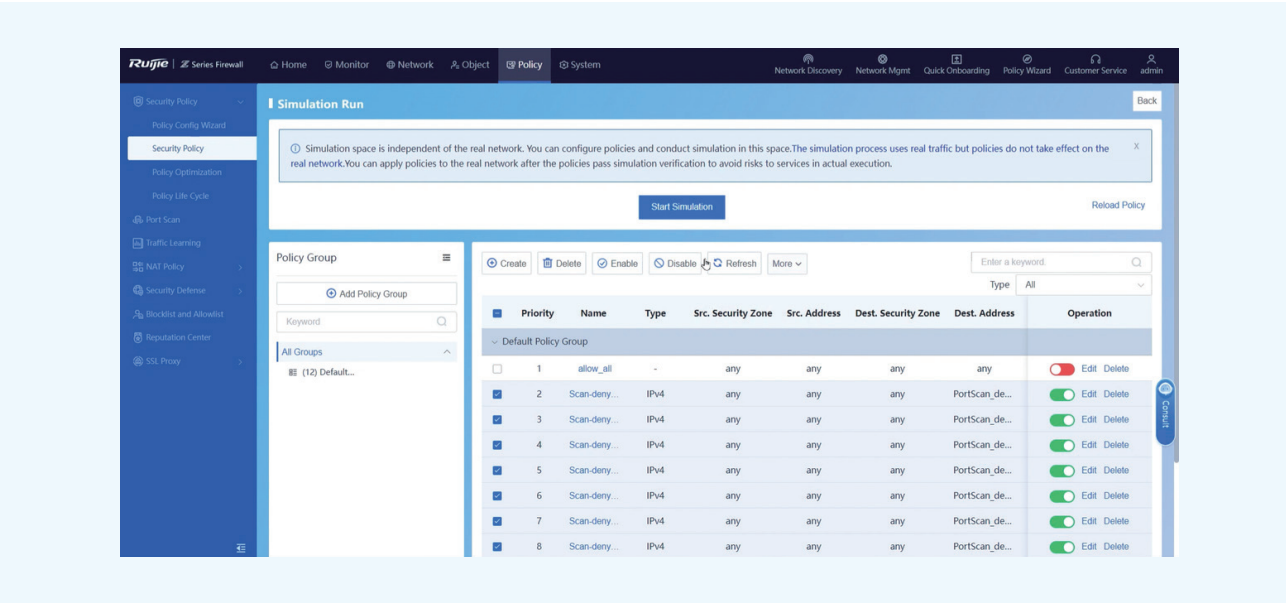
Port Scan + Traffic Learning, Intelligent Policy Recommendation, Simple Deployment

During deployment, use Port Scan to automatically identify the IP address and port number of a service system, and then enable Traffic Learning to automatically detect the service access relationship on the live network. You can also generate access control policies based on ports with one click, and complete firewall onboarding without professional knowledge.



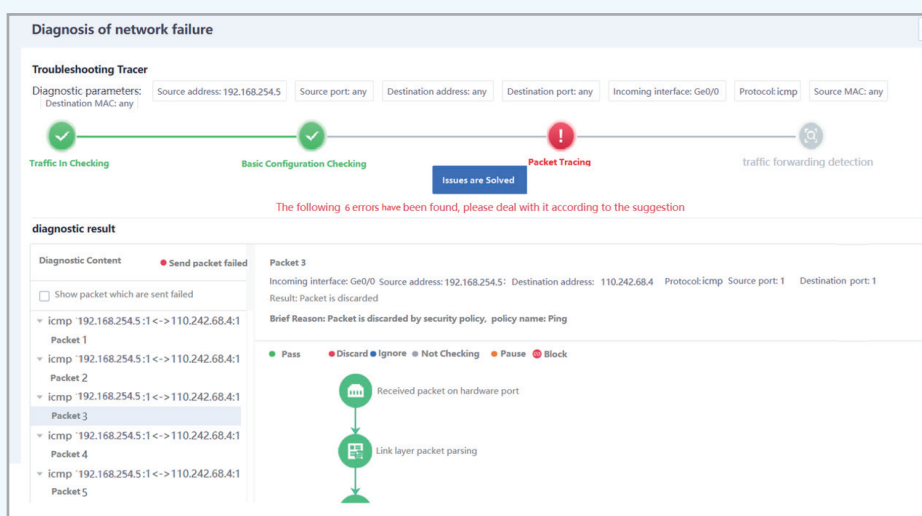
Policy Execution After Simulation, Policy Optimization Anytime

Verify policies in Policy Simulation Space without affecting actual services. Apply policies to the live network with one click after verification.

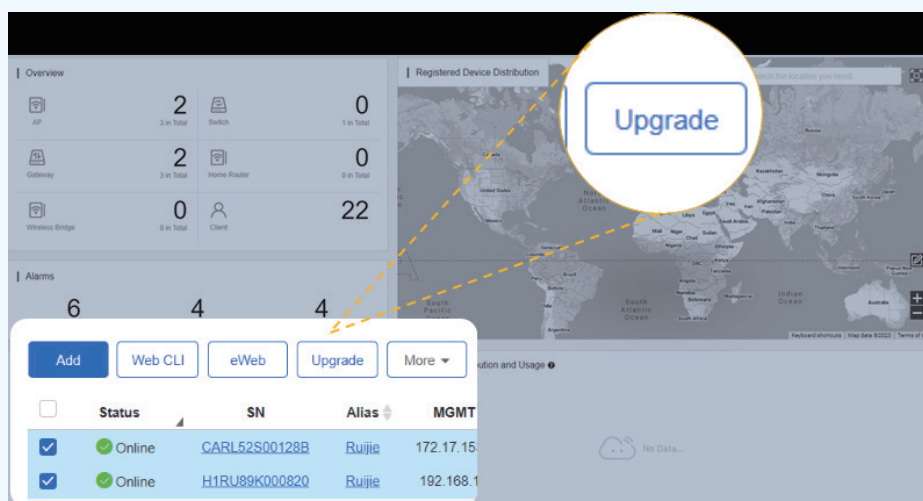


One-Click Fault Locating in the Intelligent Diagnostic Center

The intelligent diagnostic center supports automated analysis of network faults and provides a one-stop troubleshooting wizard for O&M personnel to quickly locate and resolve faults



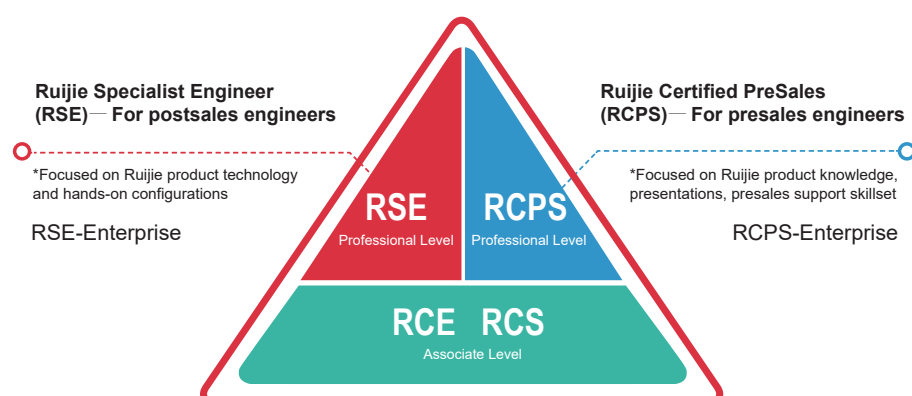
Cloud management, batch upgrade firmware remotely



Training & Services

Ruijie has its own technical training and certification system. Those with Ruijie certification will have professional network knowledge, network skills and knowledge on specific technical fields and positions, which could bring their employers great value and benefits. Ruijie Certification system includes Ruijie Specialist Engineer (RSE), Ruijie Certified PreSales (RCPS), Ruijie Certified Engineer (RCE) and Ruijie Certified Sales (RCS).

RUIJIE'S TRAINING SERVICES



RSE

Ruijie Specialist Engineer (RSE), the professional level certificate for senior postsales engineers, is oriented at the implementation, management, and maintenance of small and medium-sized enterprises network, medium and large-scale campus networks on the following different tracks.

RCPS

Ruijie Certified PreSales (RCPS), the professional level certificate for presales engineers, is oriented at planning and design the campus networks with various scales. It focuses on features of industry solutions, products and improvement of presales skillset.

RCE

Ruijie Certified Engineer for SME, the professional level certificate for pre-sales/post-sales engineers, is oriented at mastering SME product technologies, solution values and network design ability, as well as configuration of Ruijie SME products and solutions.

RCS

Ruijie Certified Sales for SME, the professional level certificate for sales/product managers, is oriented at mastering the value of Ruijie branding, SME products and industry solutions.

TECHNICAL SERVICE AND WARRANTY



Value Added TAC Support

- Complimentary professional TAC Support for ALL Ruijie partners and customers
- Staffed by Ruijie certified experts, Ruijie TAC provides technical support for products, configuration and troubleshooting and also incident management
- TAC supports 5*8 on case portal, online live chat or email, 7*24 on intelligent robot



Standard Limited Warranty

- 3-Year Warranty Free of Charge (FOC) for ALL hardware & Software
- Please contact Ruijie's local representative or Ruijie's Website for updated service related inquiry

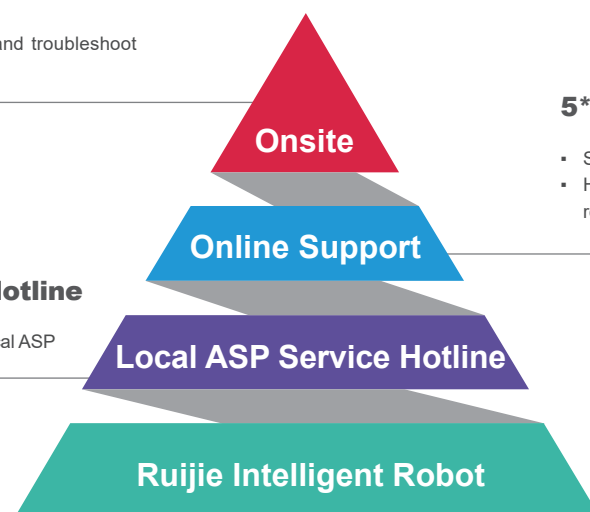
SERVICE LEVEL AGREEMENT

Onsite Support

- Onsite presence to diagnose and troubleshoot Ruijie's products and solutions

Local ASP Service Hotline

- 5*8 hotline provided by Ruijie local ASP

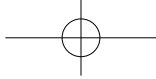


5*8 Live Chat & Case Portal

- Standard product feature support
- Hardware or software solution problem resolution

Ruijie Intelligent Robot

- 7*24 millisecond response
- Most of the frequently asked questions covered



Ruijie Networks Co., Ltd.

For further information, please visit our website <https://www.ruijienetworks.com/>

All rights are reserved by Ruijie Networks Co., Ltd. Ruijie reserves the right to change, modify, transfer, or otherwise revise this publication without notice, and the most current version of the publication shall be applicable.